

Job Name	Location		
Purchaser	Engineer		
Submitted to	Reference	Approval	Construction
Unit Designation	Schedule #		

### Specifications

Performance	Nominal Capacity	Cooling/Heating (Btu/h)	24,000 / 27,000
	Capacity Range	Cooling (Btu/h)	6,500 - 27,000
		Heating (Btu/h)	7,000 - 37,000
	SEER / EER		15.1 / 10.2
	HSPF		8.5
	Condensate (pints/hour)		5.6

Power	Voltage (øV/Hz)		1 / 208-230 / 60
	Rated Current (Low/Std./Max.)	Cooling (A)	3.0 / 10.5 / 12.0
		Heating (A)	3.0 / 10.5 / 18.0
	Max. Breaker		35 A
	Min. Circuit Ampacity		23 A

Dimensions	W X H X D (inches)	Indoor Unit	43 3/8 X 7 13/16 X 23 5/8
		Outdoor Unit	34 5/8 X 31 3/8 X 12 1/4
	Weight (lbs.)	Indoor Unit	68
		Outdoor Unit	125
	Supply duct connection (inches)		6 X 41 3/4
	Return duct connection (inside, inches)		6 5/8 X 38 1/4
	Condensate Connection		OD 1 1/4", ID 1"

Heat Exchanger	Indoor & Outdoor Unit	Type	Aluminum Fin - Copper Tube
		FPI	18
		Pipe Diameter	1/4 inch

Sound Pressure Level (dB)	Indoor Unit (high)		36
	Outdoor Unit (high)		52

Operating Temperatures	Cooling	°F	14 ≤ T ≤ 115
	Heating	°F	-4 ≤ T ≤ 75

Pipe Connections	Indoor & Outdoor	High side (flare)	1/4"
		Low side (flare)	5/8"
	Maximum Line Set Length		98 ft.
	Maximum Vertical Separation		49 ft.
	Oil Trap		Every 26' of vertical separation

Refrigerant	Type		R410A
	Control Method		Electronic Expansion Valve
	Factory Charge (oz)		67.0
	Charged for		25 ft.
	Additional Refrigerant		0.1 oz/ft over 25'

Compressor	Manufacturer		Samsung
	Type		DC, Inverter Driven, Twin Rotary
	RLA (A)		17.0

Evaporator Fan	Type		Sirocco (3)
	Air Volume (CFM)	Cooling (high)	590
		Heating (high)	688
	External Static Pressure	Standard/max. ("WC)	0.08 / 0.125

Condenser Fan	Motor		BLDC With Axial Type Fan (2)
	Output	W	140
	FLA	Amps	0.65

Accessories	Samsung condensate pump		MDP-E075SEE
	Wireless Remote Control	Wireless remote	MR-AH01U
		Wire from receiver to unit	MRW-10AU
		Wireless signal receiver	MRK-A00U
	Line sets - insulated and flared, interconnect cables included		25' - ILS2509 50' - ILS5009

Safety Certifications	ETL & ETLc
-----------------------	------------

Warranty	5 Years compressor, 3 Year Parts, 120 Day limited labor
----------	---



- Low ambient control built in
- Outdoor unit shall provide 208/230V power to indoor unit via 14AWG X 3 interconnect power cable
- Wired controller ships as standard

### Construction

Indoor unit chassis shall be constructed from galvanized steel

The outdoor unit shall be galvanized steel with a baked on powder coated finish for durability

### Heat Exchanger

The heat exchanger shall be mechanically bonded fin to copper tube

### Refrigerant System

The compressor shall be hermetically sealed, inverter controlled, Twin BLDC Rotary

Refrigerant flow shall be controlled by EEV (electronic expansion valve) at outdoor unit

### Indoor Fan

Indoor fans are twin backward curved centrifugal Sirocco type with a single BLDC motor

Three fan speed settings and auto setting

### Controls

Control signal shall be DDC type signal

Interconnect control wiring shall be 16AWG X 2 shielded wire between outdoor and indoor units

Unit shall be operated via wired or wireless controller

Nominal cooling capacities are based on: Indoor temperature: 80°F DB, 67°F WB. Outdoor temperature: 95°F DB, 75°F WB.

Nominal heating capacities are based on: Indoor temperature: 70°F DB, 60°F WB. Outdoor temperature: 47°F DB, 43°F WB.

Quietside maintains a policy of ongoing development, specifications are subject to change without notice. Refer to www.AHRIdirectory.org for current reference numbers.

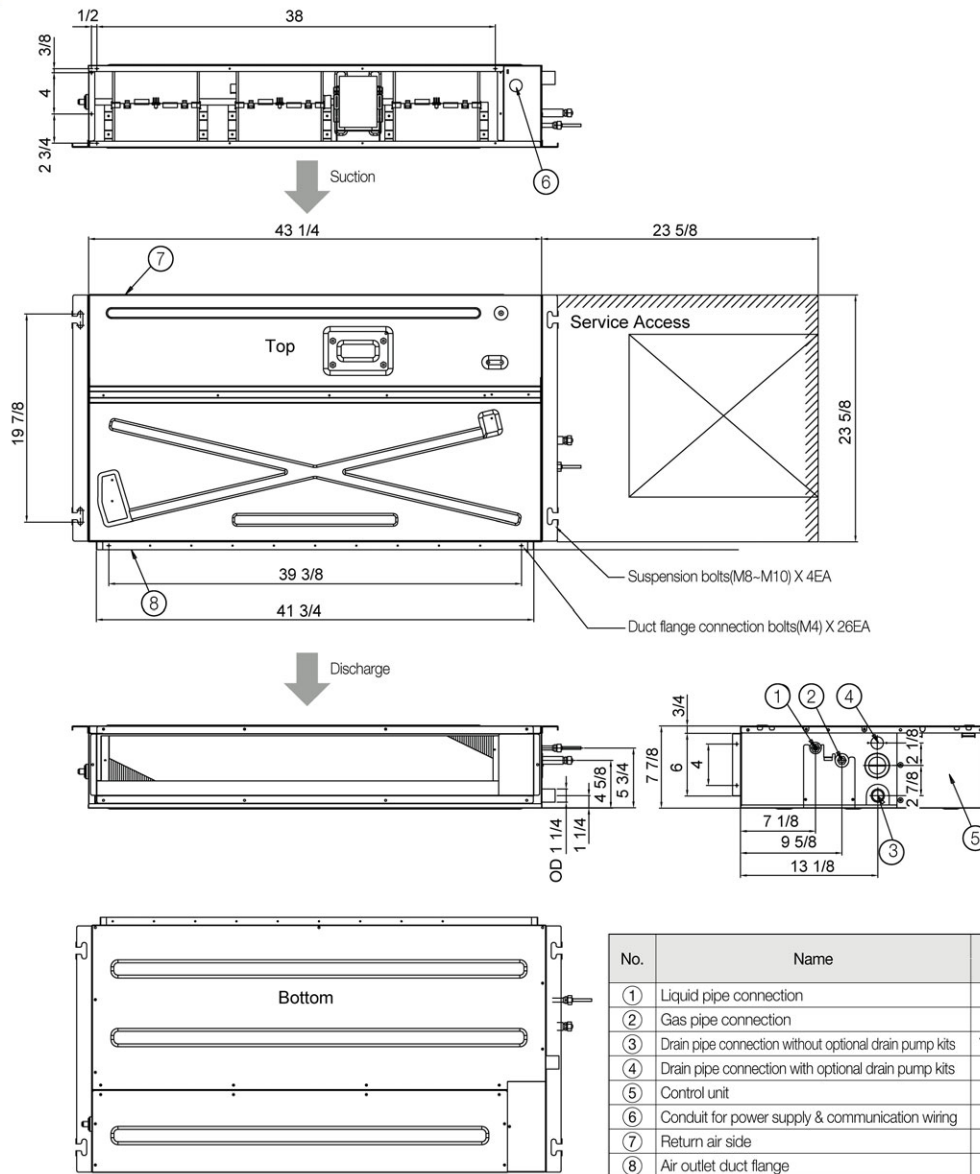


**SUBMITTAL EH070CAV / UH070CAV**  
**Slim Duct, single zone split system**

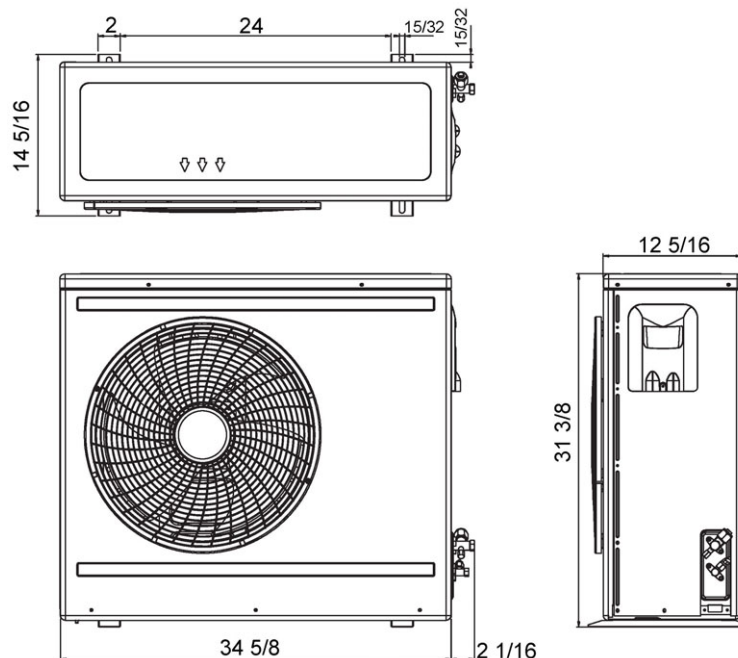
Page 2 of 3

EH070CAV

Unit: Inches



UH070CAV



Quietside maintains a policy of ongoing development, specifications are subject to change without notice.

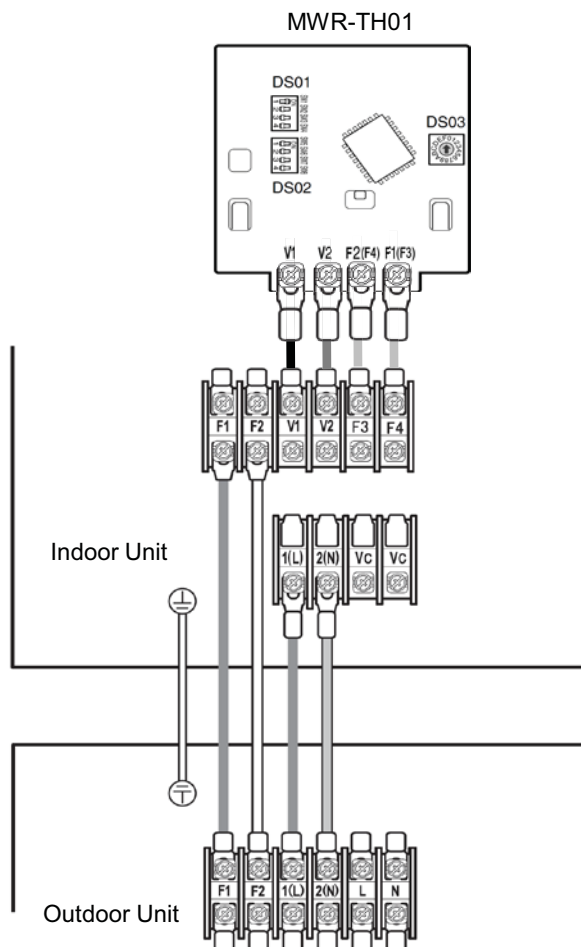
888-699-6067

[www.Quietside.com](http://www.Quietside.com)



### Easy air handler control

- Air handler operation ON/OFF
- Air handler operation mode, set temperature, air flow direction, fan speed
- Error display
- Filter replacement alarm display and reset
- Single indoor unit control or multiple unit control (maximum 16 units)
- Restriction on wireless control usage
- Heat mode skip option
- Indoor unit operation state display



- DC 12V (V1/V2) power supplied by indoor unit
- RS485 communication (F3/F4)
- 16AWG shielded cable is necessary for proper operation

Unit: inches

